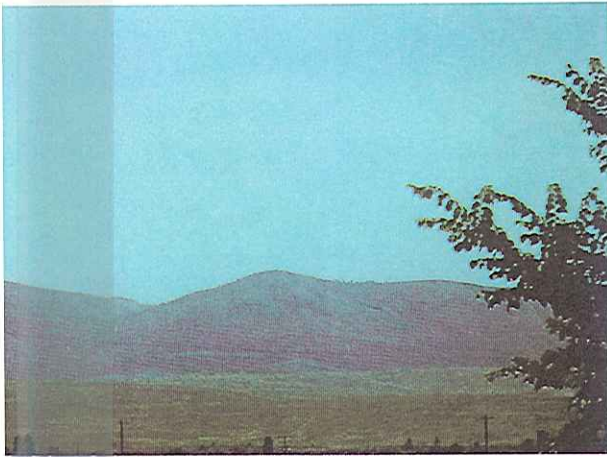
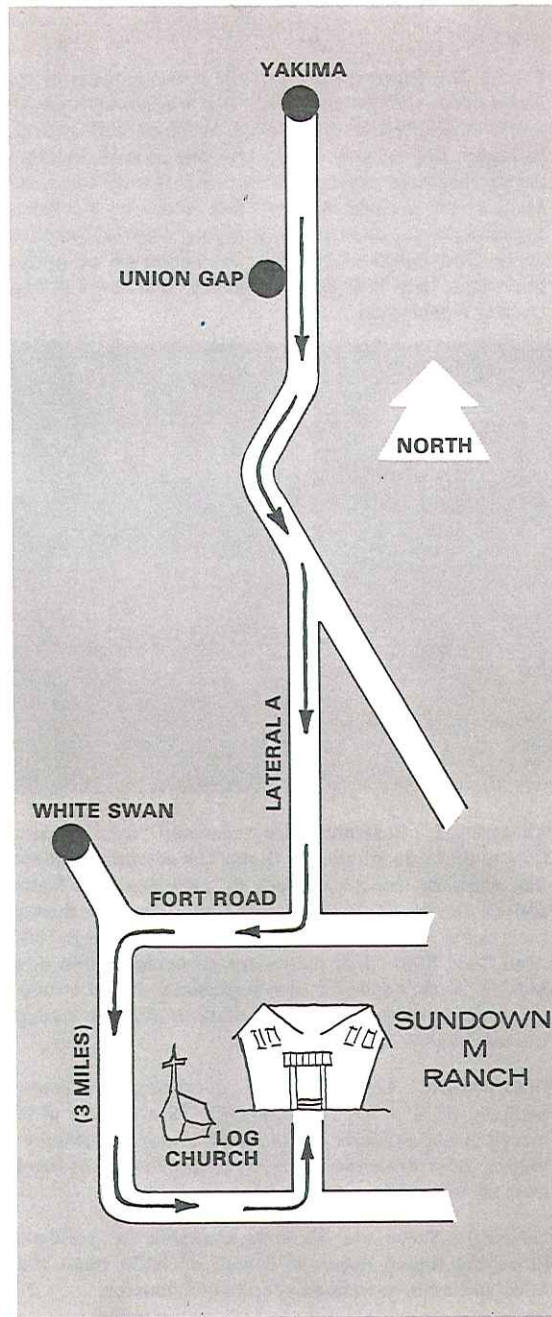


ington, on the east slope of the Cascade Mountains. The atmosphere provides a quiet and solitude that is an effective part of the therapy. The establishment is a result of intensive effort and forward thinking by the Yakima Council on Alcoholism, the County Board of Health, the United Christian Missionary Society and the Yakima Indian Nation. Labor and money from all these sources plus individuals and progressive private businesses make the Ranch a reality.



Laundry facilities are provided. Casual clothes are most appropriate. There are four definite seasons so warm clothes in winter and cool clothing in summer is needed. Bring personal toilet articles and similar needs; also walking shoes for outdoor wear.

**SUNDOWN M RANCH, INC.**  
 P. O. Box 81  
 White Swan, Washington 98952  
 Phone White Swan (509) 874-4915



SHIELDS BAG AND PRINTING CO.



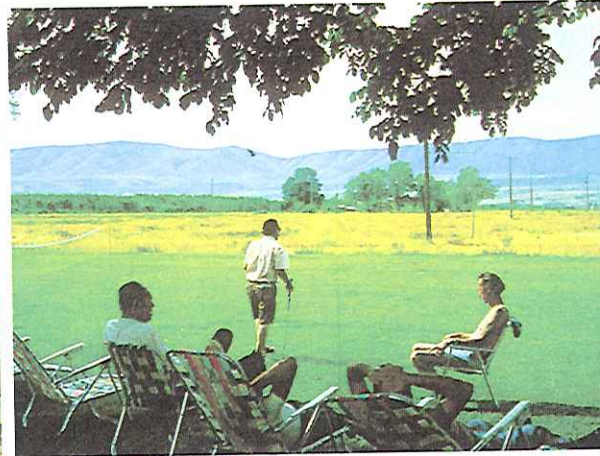
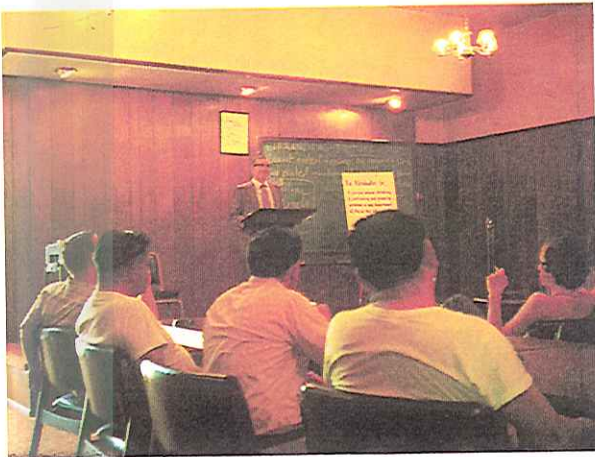
A modern alcoholism treatment center for men.



"80 ACRES OF SERENITY"

**STAFF:** The Ranch operates with a compliment of ten professional staff. In addition, there are five staff people to man the kitchens, dormitories, buildings and grounds. Full-time professional staff includes social workers, clergy, business administration and family counselor. Many of the professional staff are recovered alcoholics. The program is directed by a highly qualified administrator. The Board of Trustees is composed of judges, physicians, city and county officials and laymen from Central Washington.

**RECOVERY PROGRAM:** The course of therapy is completed in 21 days. Residents are admitted to immediate participation at any time. Occasionally a resident may need to remain a few extra days for some additional treatment. The Ranch is not a detoxification center. Physicians and hospitals are available to residents. Medical expenses are in addition to Ranch fees. Intensive therapy includes individual and small group sessions plus three mandatory lecture and discussion meetings each day.



**PURPOSE:** The Ranch is a non-profit corporation established as a health facility to free the problem drinker from dependence on alcohol. The recovery and rehabilitation program is composed of a course based on education, re-learning and self-understanding. The principal qualification for residence is a desire for sobriety and a willingness to cooperate with the staff in the self-help needed for rehabilitation.

**REFERRALS:** Residents are accepted from Yakima County and throughout the State. Out-of-state residents may apply for therapy and pay an additional fee. Reservations can be made by phone to the Ranch or through the Yakima Information and Referral Center (CH 8-1800, Area Code 509). Only males are accepted at this time. Men on Public Assistance are welcome provided arrangements for such assistance are made in advance through the resident's local welfare office.

**RECREATION:** Lawn games, gardening, horseshoe pitching, table tennis, pool and color TV are some of the more popular activities at the Ranch. There is something enjoyable for everyone to eliminate any feeling of loneliness or boredom.

**GROWTH:** There are 45 beds available for residents. Since the Ranch began in March of 1968 more than 1250 residents have been admitted for therapy.

**IT'S A FACT:** At least five per cent of the adult population in the State of Washington are problem drinkers or alcoholics . . . about 90 thousand age 18 and older. Each alcoholic affects the lives of four or five others in a direct way. Unchecked alcoholism shortens the life span an average of 12 years. Authorities feel that alcoholism costs industry over four billion dollars annually. Excessive drinking and driving accounts for 50 per cent of traffic deaths each year. Results in industry follow-up programs on a proven analysis shows that over 60 per cent of employees who are alcoholics or problem drinkers recover and lead normal sober lives.

**THE RANCH:** The physical plant includes a campus of two beautiful brick dormitories, two homes. Six buildings are for shops, storage, garages, etc. The dorms have comfortable two and three bed rooms with no crowding. The Ranch is located in the lush Yakima Valley near White Swan, 30 miles south of Yakima, Wash-

